























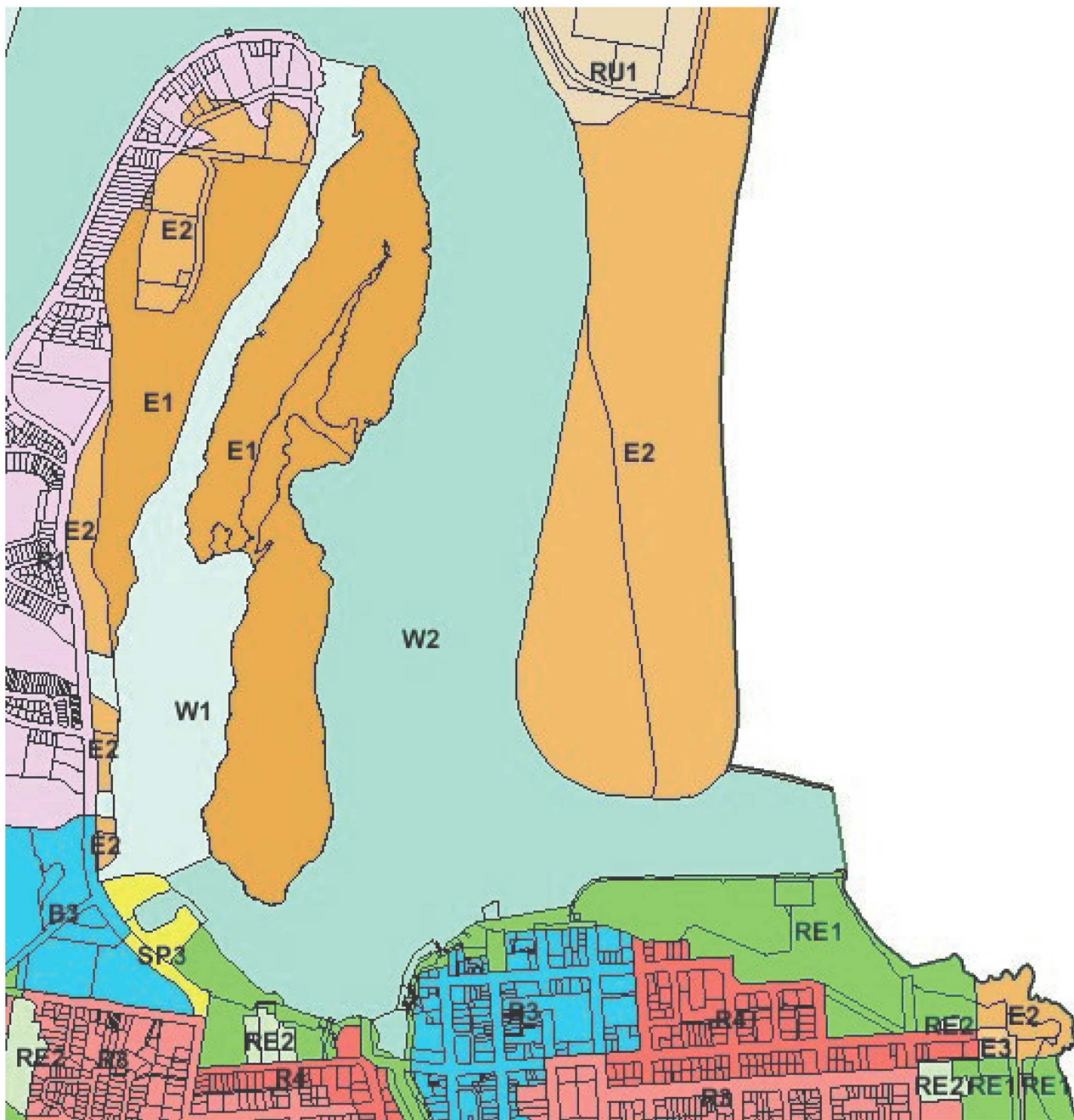




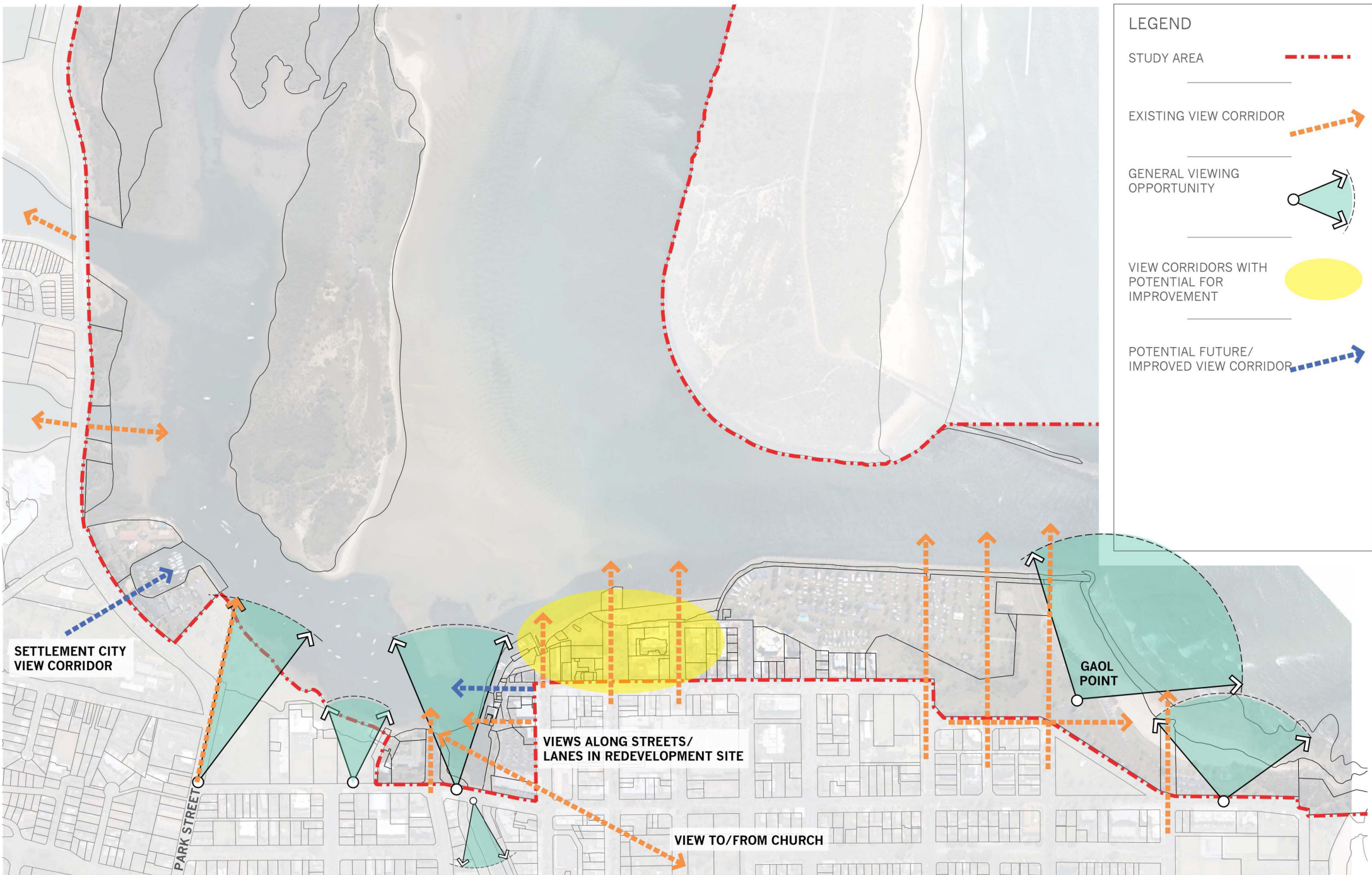
LEGEND

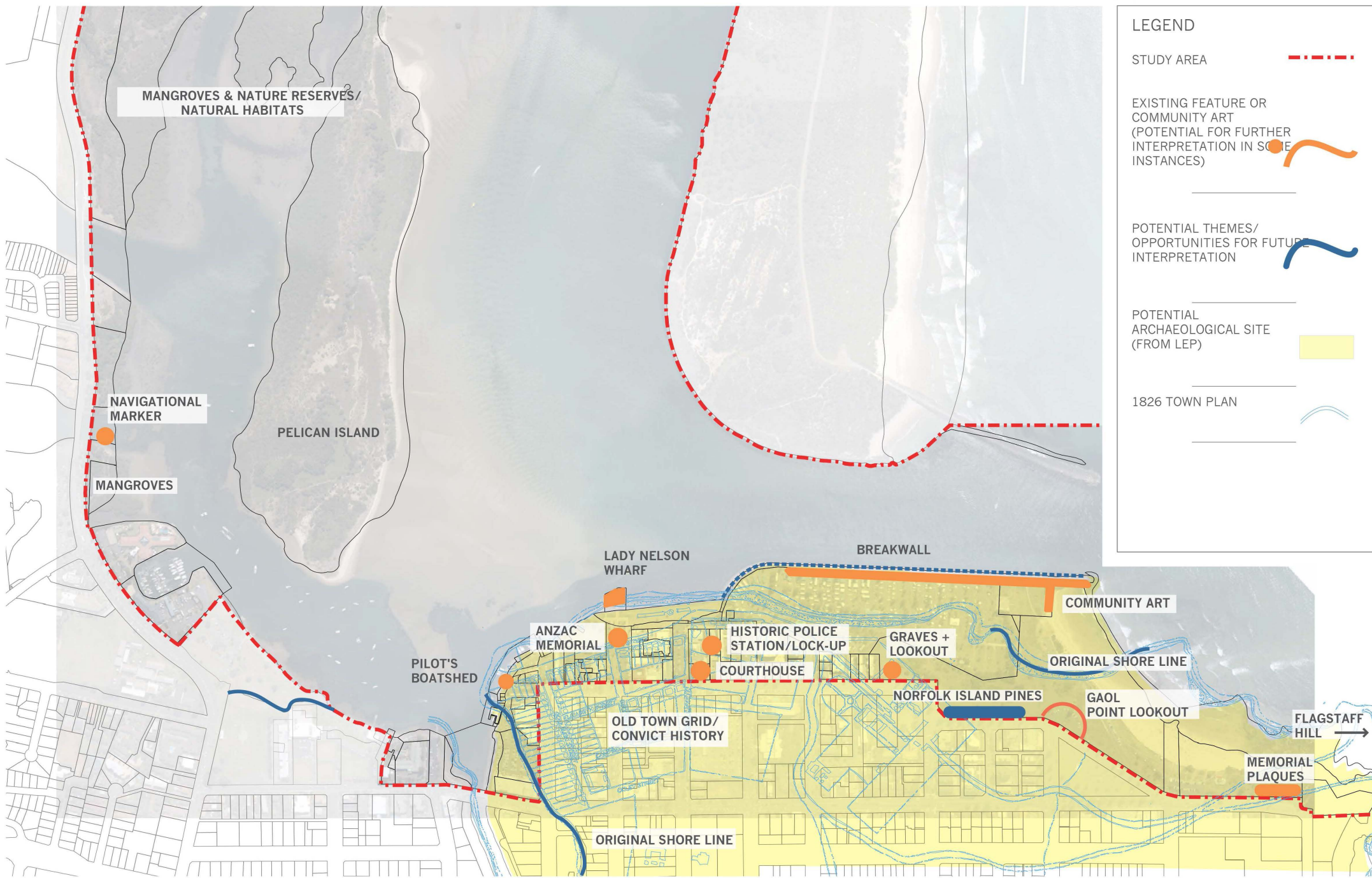
-  Study Area
-  Nature Reserves administered by OEH. Excluded from PoM
-  1 Settlement Point Ferry to North Shore
-  2 Settlement Point Reserve
-  3 Sails Resort/ Port Macquarie Marina
-  4 Trailer Parking and Boat Ramp
-  5 Bowling Club and Croquet Lawns
-  6 Swing Moorings
-  7 Sea Rescue
-  8 Scouts
-  9 Country Comfort Motel
-  10 Public Jetty/ Pontoon (Council) and Pump-out
-  11 Plaza Car Park Site
-  12 Hastings River Fisherman's Co-operative
-  13 Maritime Museum (Pilot's Boatshed)
-  14 Commercial Moorings
-  15 Lady Nelson Wharf
-  16 Royal Hotel
-  17 Allman's Hill
-  18 Mrs York's Garden
-  19 Gaol Point/ Lion's Park and Lookout
-  20 Breakwall Tourist Park
-  21 Regional Skate Park
-  Major Precincts
 - Settlement Point
 - Marina Precinct
 - Town Green (Town Green to Kooloonbung Creek)
 - Beach Green (Marine Park and Town Beach)

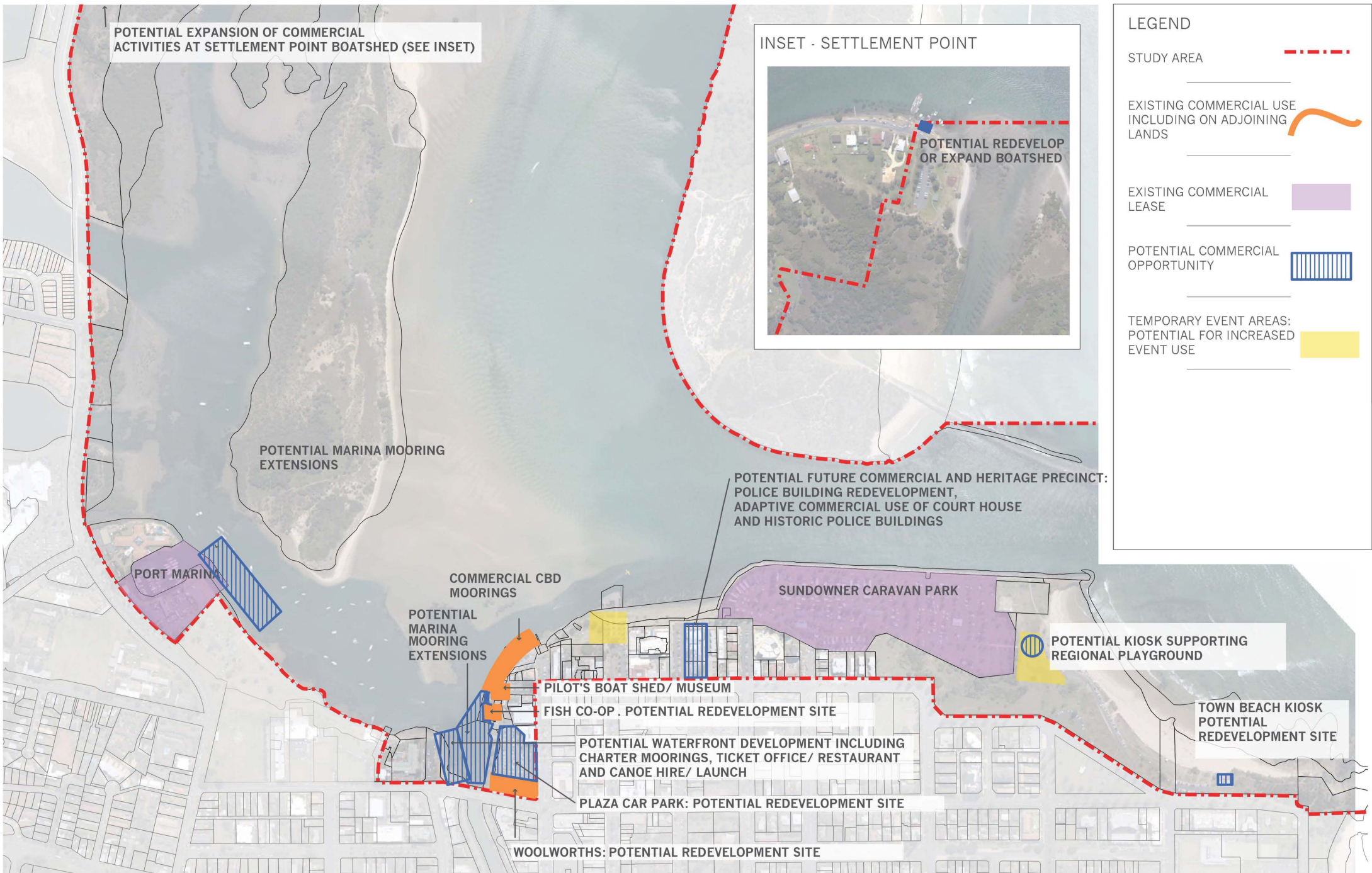


Zone

- B1 Neighbourhood Centre
- B2 Local Centre
- B3 Commercial Core
- B4 Mixed Use
- B5 Business Development
- B7 Business Park
- E1 National Parks and Nature Reserves
- E2 Environmental Conservation
- E3 Environmental Management
- E4 Environmental Living
- IN1 General Industrial
- IN2 Light Industrial
- IN3 Heavy Industrial
- IN4 Working Waterfront
- R1 General Residential
- R2 Low Density Residential
- R3 Medium Density Residential
- R4 High Density Residential
- R5 Large Lot Residential
- RE1 Public Recreation
- RE2 Private Recreation
- RU1 Primary Production
- RU2 Rural Landscape
- RU3 Forestry
- RU5 Village
- RU6 Transition
- SP1 Special Activities
- SP2 Infrastructure
- SP3 Tourist
- W1 Natural Waterways
- W2 Recreational Waterways
- W3 Working Waterways
- DM Deferred Matter



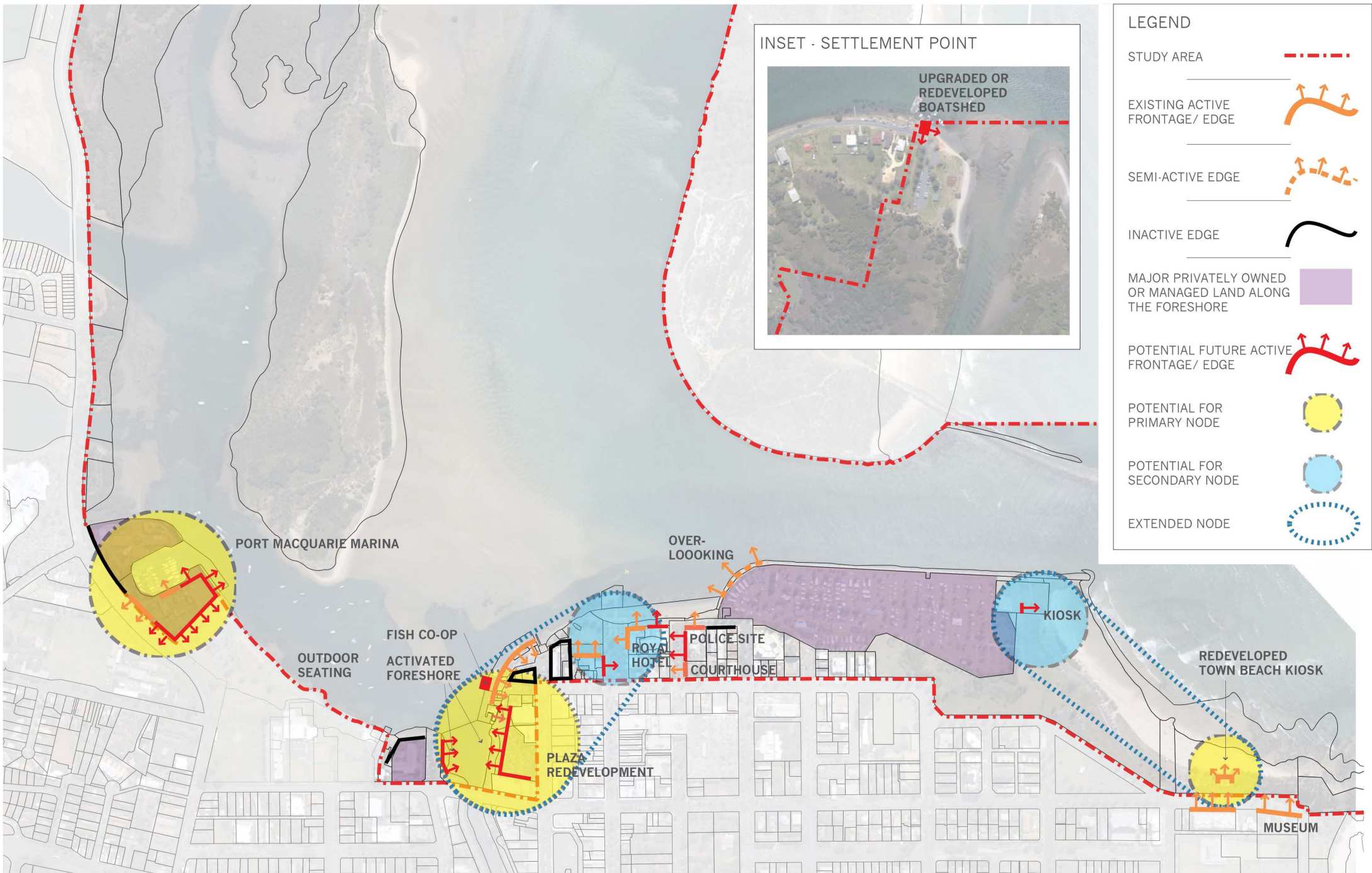


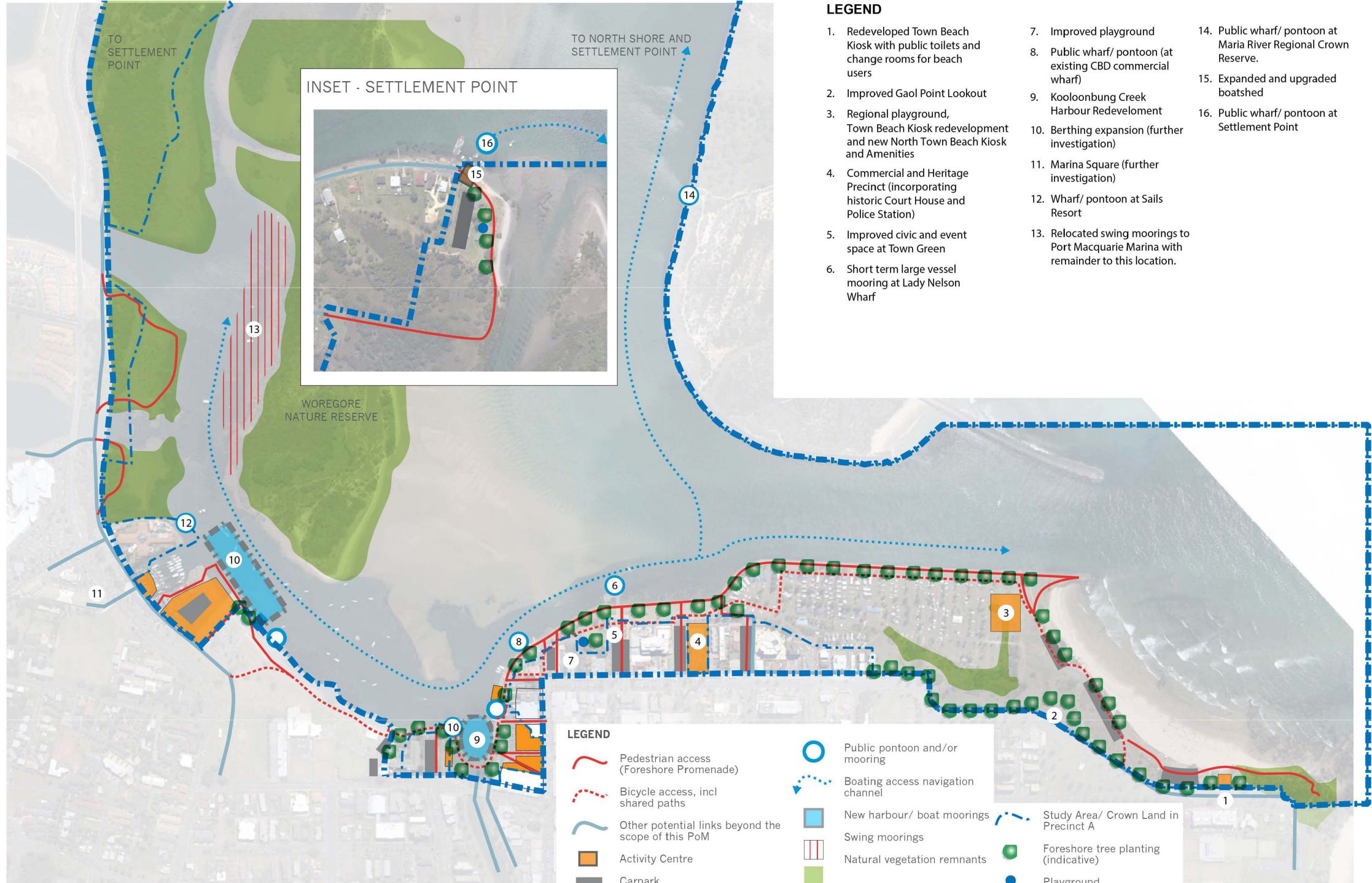




LEGEND

- - - Study Area
 - - - Indicative Boating Route
- PROPOSED PUBLIC BOATING WHARFS
- ① Settlement Point
 - ② North Shore Reserve
 - ③ Maria River Regional Crown Reserve
 - ④ Sails Resort / Port Macquarie Marina
 - ⑤ Westport Park
 - ⑥ Kooloonbung Creek
 - ⑦ Commercial Moorings Site
 - ⑧ Fish Co-op
 - ⑨ Lady Nelson Wharf





LEGEND

- 1. Redeveloped Town Beach Kiosk with public toilets and change rooms for beach users
- 2. Improved Gaol Point Lookout
- 3. Regional playground, Town Beach Kiosk redevelopment and new North Town Beach Kiosk and Amenities
- 4. Commercial and Heritage Precinct (incorporating historic Court House and Police Station)
- 5. Improved civic and event space at Town Green
- 6. Short term large vessel mooring at Lady Nelson Wharf
- 7. Improved playground
- 8. Public wharf/ pontoon (at existing CBD commercial wharf)
- 9. Kooloonbung Creek Harbour Redevelopment
- 10. Berthing expansion (further investigation)
- 11. Marina Square (further investigation)
- 12. Wharf/ pontoon at Sails Resort
- 13. Relocated swing moorings to Port Macquarie Marina with remainder to this location.
- 14. Public wharf/ pontoon at Maria River Regional Crown Reserve.
- 15. Expanded and upgraded boatshed
- 16. Public wharf/ pontoon at Settlement Point

INSET - SETTLEMENT POINT



LEGEND

- Pedestrian access (Foreshore Promenade)
- Bicycle access, incl shared paths
- Other potential links beyond the scope of this PoM
- Activity Centre
- Carpark
- Public pontoon and/or mooring
- Boating access navigation channel
- New harbour/ boat moorings
- Swing moorings
- Natural vegetation remnants
- Foreshore tree planting (indicative)
- Playground
- Study Area/ Crown Land in Precinct A
- Foreshore tree planting (indicative)
- Playground